



TRYON, NORTH CAROLINA

*Where the mountains and the good life begin*

## MOSS PARK FARM — HISTORIC GOWENSVILLE

Location: Landrum, SC   List Price: \$889,000   Acreage: 10.34 acres   NCM577808



This custom-built 3 bedroom/2.5 bath home was designed to enjoy year-round mountain views from almost every room. This contemporary home offers one-story living with two guest rooms with shared bath.

Very privately set and conveniently located to Links O'Tryon Golf Course, Motlow Creek Equestrian Center, schools, shopping, and interstate highways. Tryon International Equestrian Center is approximately 30 minutes away.

This historic equestrian neighborhood offers the organized and well-maintained GENTS . . . Gowensville Equestrian & Nature Trail System.

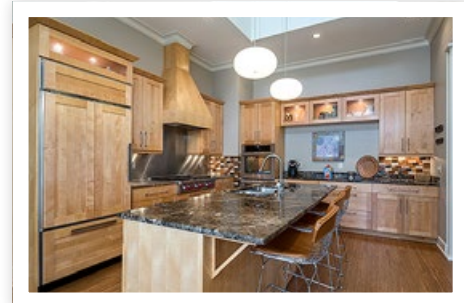
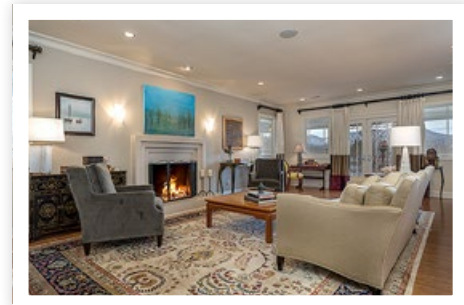
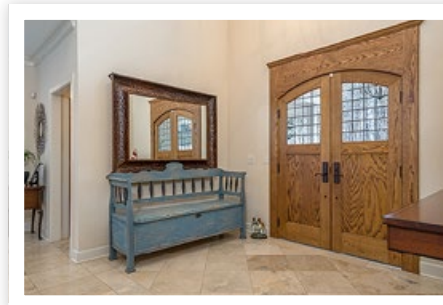


[www.tryonhorsefarms.com](http://www.tryonhorsefarms.com)



## Stunning Living Space

- Three Bedroom, 2.5 Bath contemporary home with two-car garage.
- Entry features dramatic 18' ceiling and Travertine floors leading into hallway.
- Living room with gas log fireplace.
- One-story living with two guest rooms with shared bath.
- Adorable powder room has an antique bird bath lavatory dated 1842 (stamped).
- Wrap-around porch with sky lights and stunning mountain views

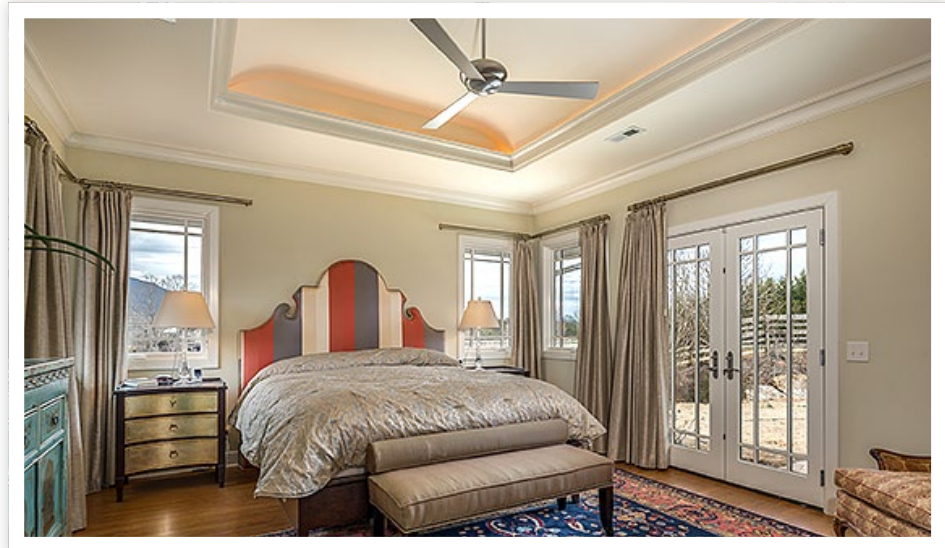


## State-of-the-Art Kitchen

- Large gourmet kitchen contains Sub-Zero Refrigerator, Wolf Range and Hood and Miele dishwasher.
- Custom, quilted maple cabinetry.
- Counters flanking stove and backsplash are stainless steel. Remaining counters and island are marble.
- Large adjoining pantry with wine cabinet is well organized with massive shelves and work area.

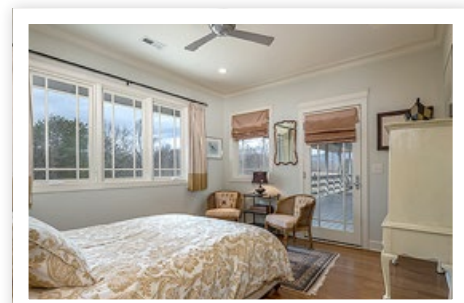
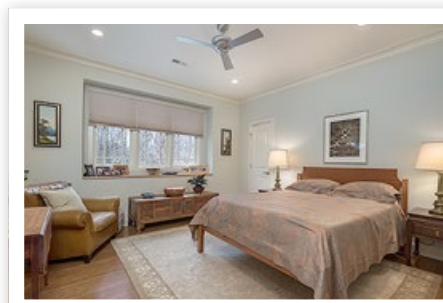
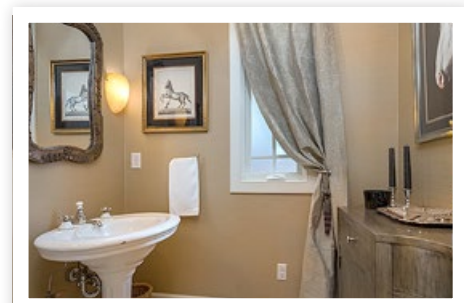
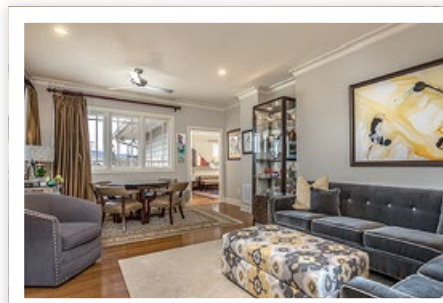
## Master Suite & Bedrooms

- Exquisite master suite has adjoining den/office area and boasts tray ceiling
- Elaborate bath with dressing room, shower and soaking tub.



## Lower Level

- Well planned lower level has extensive storage and one finished room
- Additional one-car garage.





## Equestrian Amenities

- Historic equestrian neighborhood was the original home of Greenville County Hounds organized by Gordon Wright in the early 50's and is currently a part of the Tryon Hounds Hunt Country.
- Custom redwood barn adds to the ambiance of this country setting. It contains 4 stalls with mats, wide concrete center isle to accommodate equipment with hay storage above.
- Pastures are fenced with a gentle terrain.
- Organized GENTS (Gowensville Equestrian and Nature Trail System) with membership contains well-maintained trails with immediate access across the road from this property.
- Three-bay equipment building opening up to a dry lot which could easily be converted to additional stalls if needed.

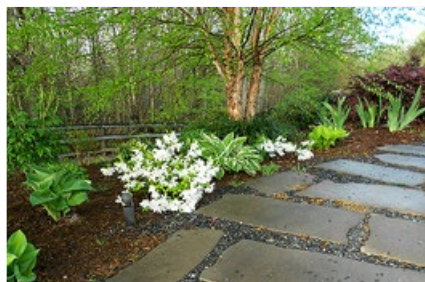


## Grounds

- Exquisite landscaping designed for this property.
- Serenely set in-ground, heated salt water pool
- Enjoy the sweeping year round mountain views.

## Notes

- Tractor and all implements convey with property.



## LILLIE BROWN

*Distinctive Equestrian Properties and Upscale Residential Homes*

Town and Country Realtors, 951 S. Trade Street, Tryon, NC 28782

LHBrown@windstream.net, 864-978-9465 Cell, 828-894-3861 pm

[www.TryonHorseFarms.com](http://www.TryonHorseFarms.com)